

BOARD UPDATE

PROSPER INDEPENDENT SCHOOL DISTRICT



LILYANA ELEMENTARY SCHOOL (ES#16)

AS OF DECEMBER 2022

WORK COMPLETED AND ONGOING:

Site

- Retaining wall back filling ongoing
- Irrigation meters installed, irrigation continues around the south and north side
- Back fill behind curbs and island ongoing

Building

- Steel erection ongoing – Areas 1, 2 and 4 (clerestory)
- Roof deck complete – Areas 2 and 3
- Roof Deck Installation ongoing – Area 4
- ICF walls are complete
- Storm shelter complete; baffle installation ongoing
- CMU wall erection ongoing in kitchen
- Exterior brick work ongoing – Area 4
- Metal stud framing ongoing – Area 4
- MEP rough-in ongoing – Area 4



BOARD UPDATE

PROSPER INDEPENDENT SCHOOL DISTRICT



LILYANA ELEMENTARY SCHOOL (ES#16)

AS OF DECEMBER 2022



BOARD UPDATE

PROSPER INDEPENDENT SCHOOL DISTRICT



LILYANA ELEMENTARY SCHOOL (ES#16)

AS OF DECEMBER 2022



Main Entry



BOARD UPDATE

PROSPER INDEPENDENT SCHOOL DISTRICT



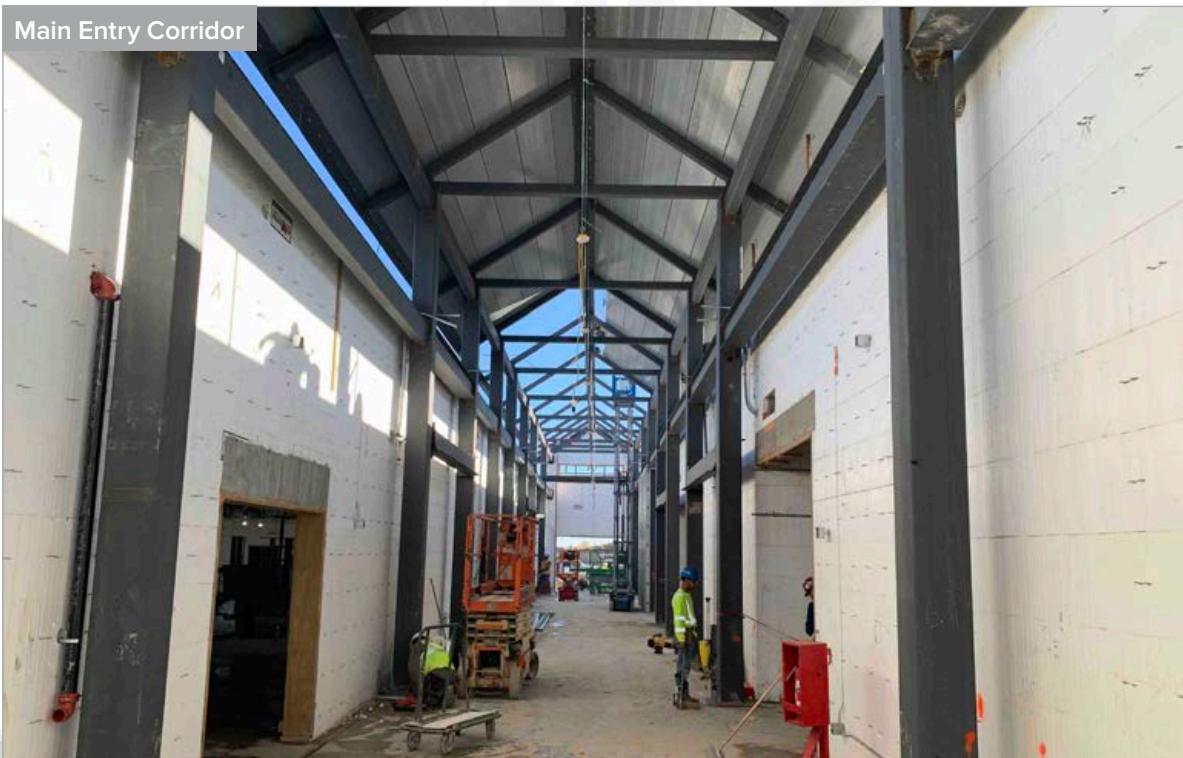
LILYANA ELEMENTARY SCHOOL (ES#16)

AS OF DECEMBER 2022

Gymnasium (Tornado Shelter)



Main Entry Corridor



BOARD UPDATE

PROSPER INDEPENDENT SCHOOL DISTRICT



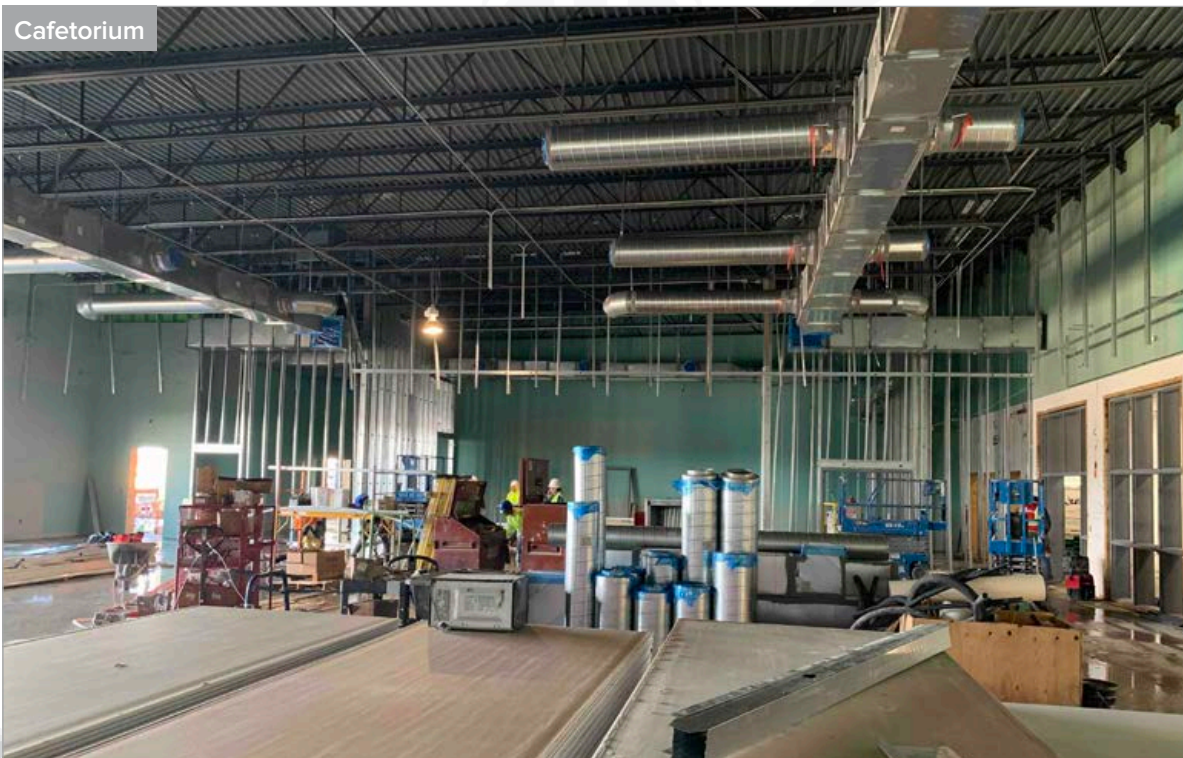
LILYANA ELEMENTARY SCHOOL (ES#16)

AS OF DECEMBER 2022

Roof Deck Installation



Cafetorium



BOARD UPDATE

PROSPER INDEPENDENT SCHOOL DISTRICT



LILYANA ELEMENTARY SCHOOL (ES#16)

AS OF DECEMBER 2022

Interior of Gymnasium (Tornado Shelter)



Exterior Masonry Progress at Kitchen



BOARD UPDATE

PROSPER INDEPENDENT SCHOOL DISTRICT



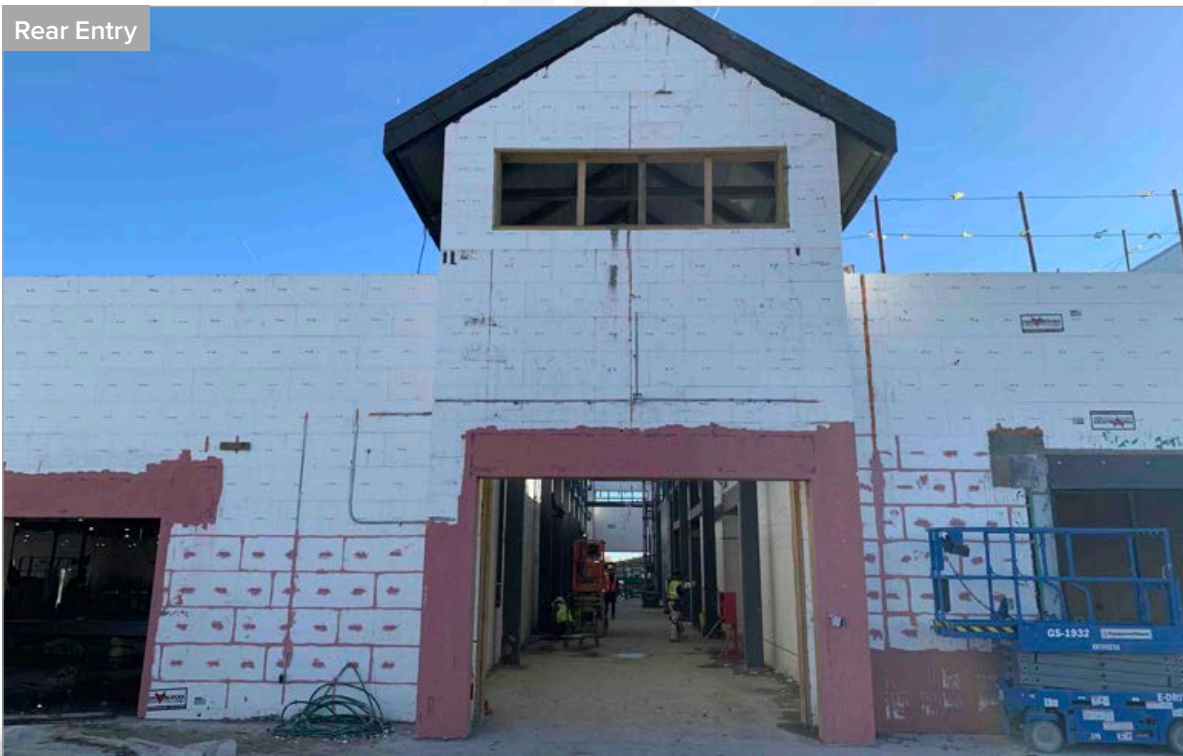
LILYANA ELEMENTARY SCHOOL (ES#16)

AS OF DECEMBER 2022

Exterior Masonry Progress



Rear Entry



BOARD UPDATE

PROSPER INDEPENDENT SCHOOL DISTRICT



LILYANA ELEMENTARY SCHOOL (ES#16)

AS OF DECEMBER 2022

Site Retaining Wall Along Coit Road



BOARD UPDATE

PROSPER INDEPENDENT SCHOOL DISTRICT



DAN CHRISTIE ELEMENTARY SCHOOL (ES#17)

AS OF DECEMBER 2022

WORK COMPLETED AND ONGOING:

- | Site | Building |
|---|---|
| <ul style="list-style-type: none">• East side fire lane complete• West side fire lane ongoing• Water line installed and passed pressurized inspection• Light pole layout ongoing | <ul style="list-style-type: none">• Building slab poured – Area 4; Prep for slab pour ongoing – Area 3• Underground electrical complete – Areas 1, 2, 3 and 4• Underground plumbing ongoing – Areas 1 and 2 |



BOARD UPDATE

PROSPER INDEPENDENT SCHOOL DISTRICT



DAN CHRISTIE ELEMENTARY SCHOOL (ES#17)

AS OF DECEMBER 2022



BOARD UPDATE

PROSPER INDEPENDENT SCHOOL DISTRICT

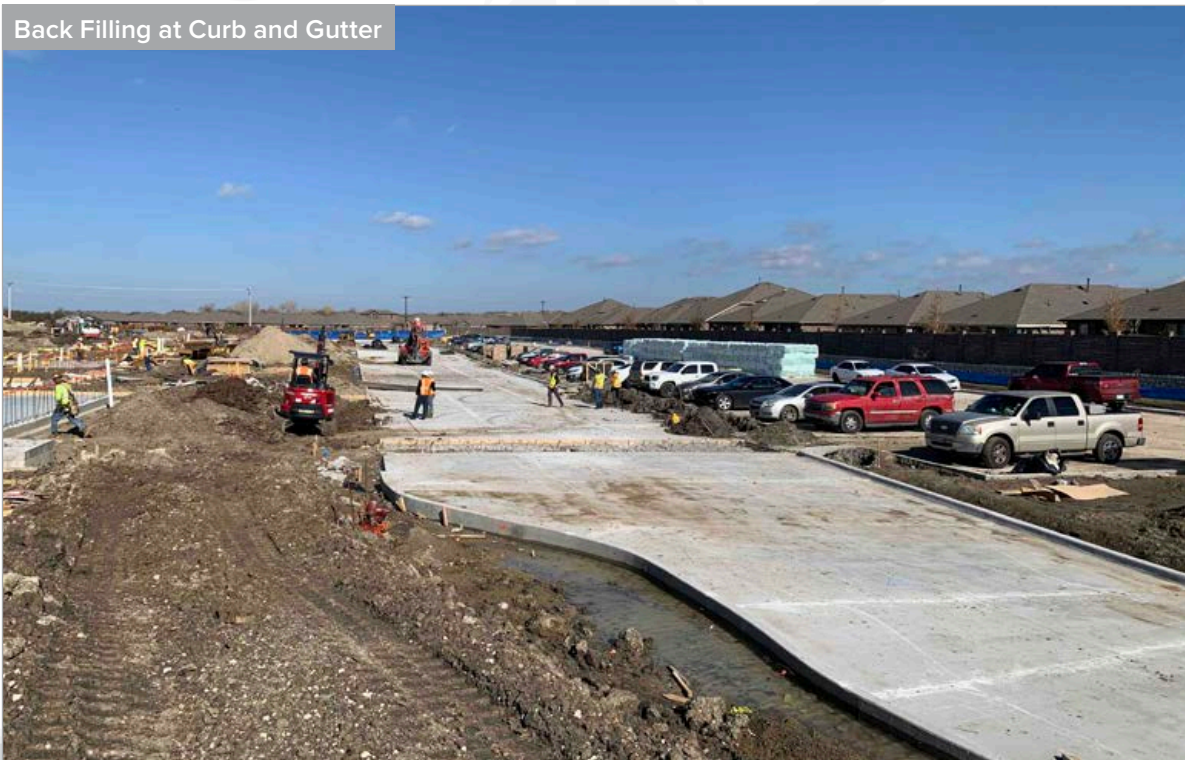


DAN CHRISTIE ELEMENTARY SCHOOL (ES#17)

AS OF DECEMBER 2022



Back Filling at Curb and Gutter



BOARD UPDATE

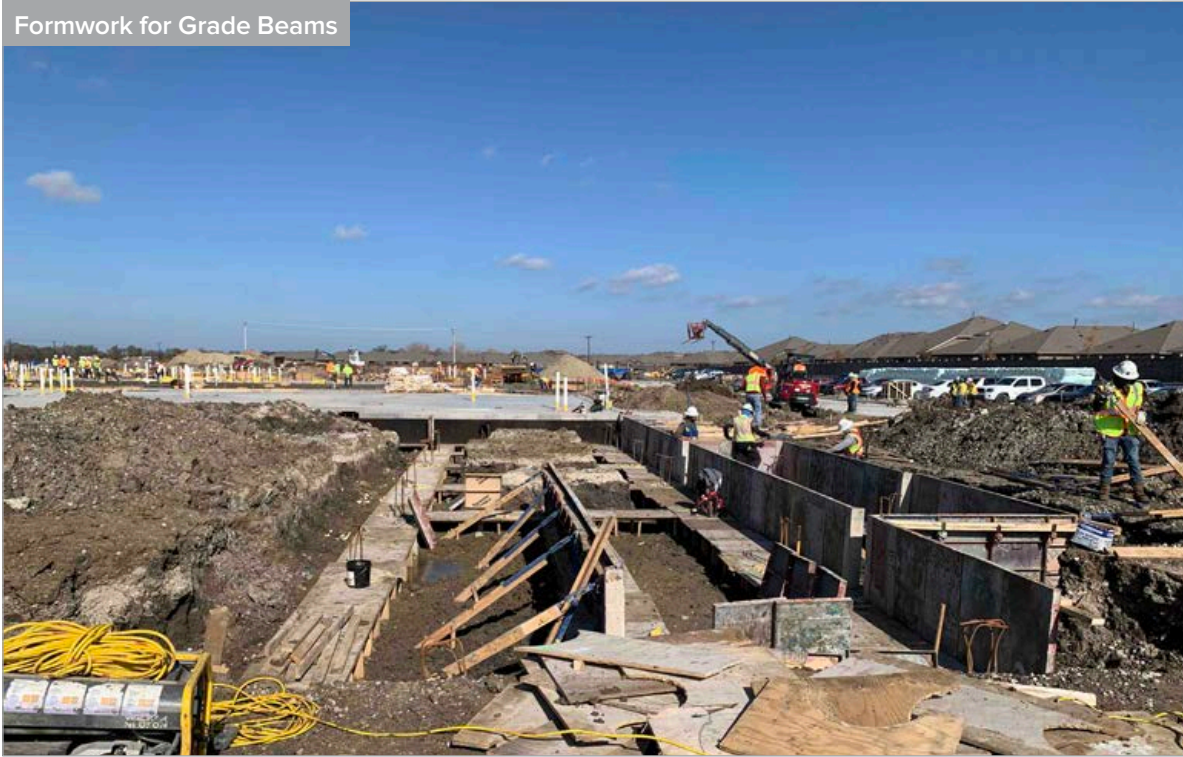
PROSPER INDEPENDENT SCHOOL DISTRICT



DAN CHRISTIE ELEMENTARY SCHOOL (ES#17)

AS OF DECEMBER 2022

Formwork for Grade Beams



Underslab Utilities



BOARD UPDATE

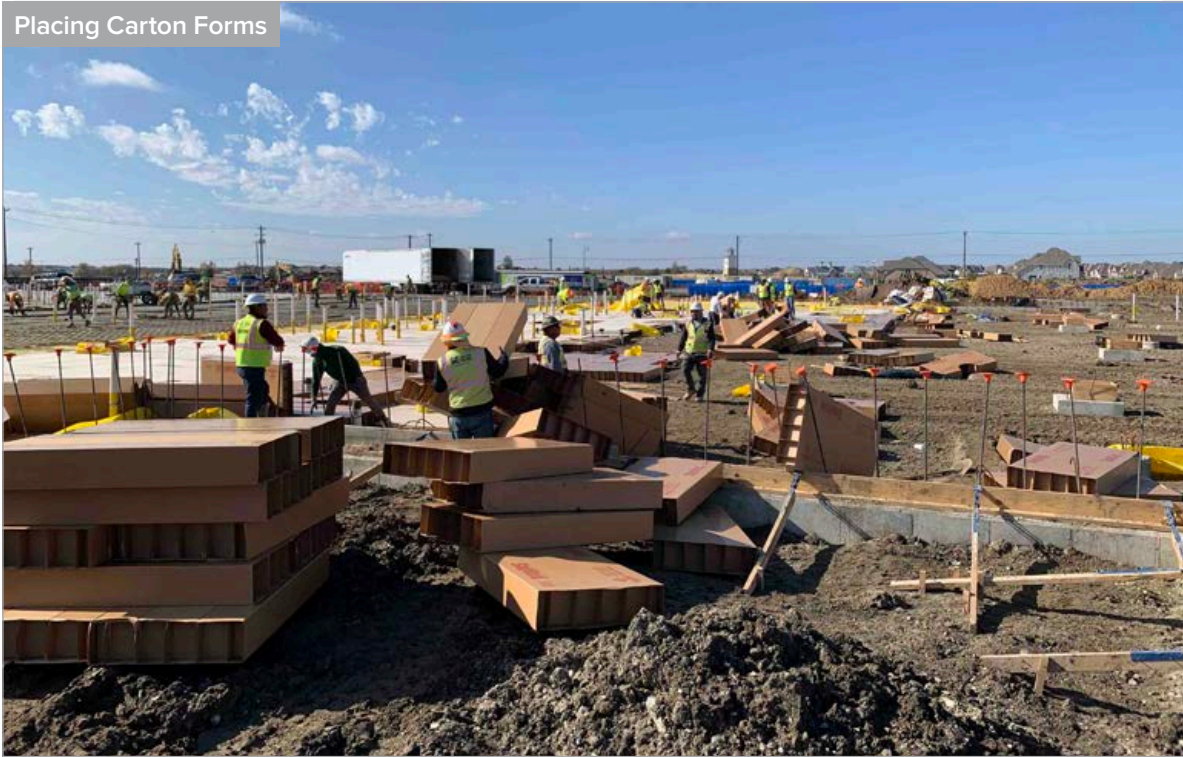
PROSPER INDEPENDENT SCHOOL DISTRICT



DAN CHRISTIE ELEMENTARY SCHOOL (ES#17)

AS OF DECEMBER 2022

Placing Carton Forms



Installing Vapor Barrier on Carton Forms



BOARD UPDATE

PROSPER INDEPENDENT SCHOOL DISTRICT



DAN CHRISTIE ELEMENTARY SCHOOL (ES#17)

AS OF DECEMBER 2022

Placing Foundation Reinforcing



Placing Foundation Reinforcing



BOARD UPDATE

PROSPER INDEPENDENT SCHOOL DISTRICT



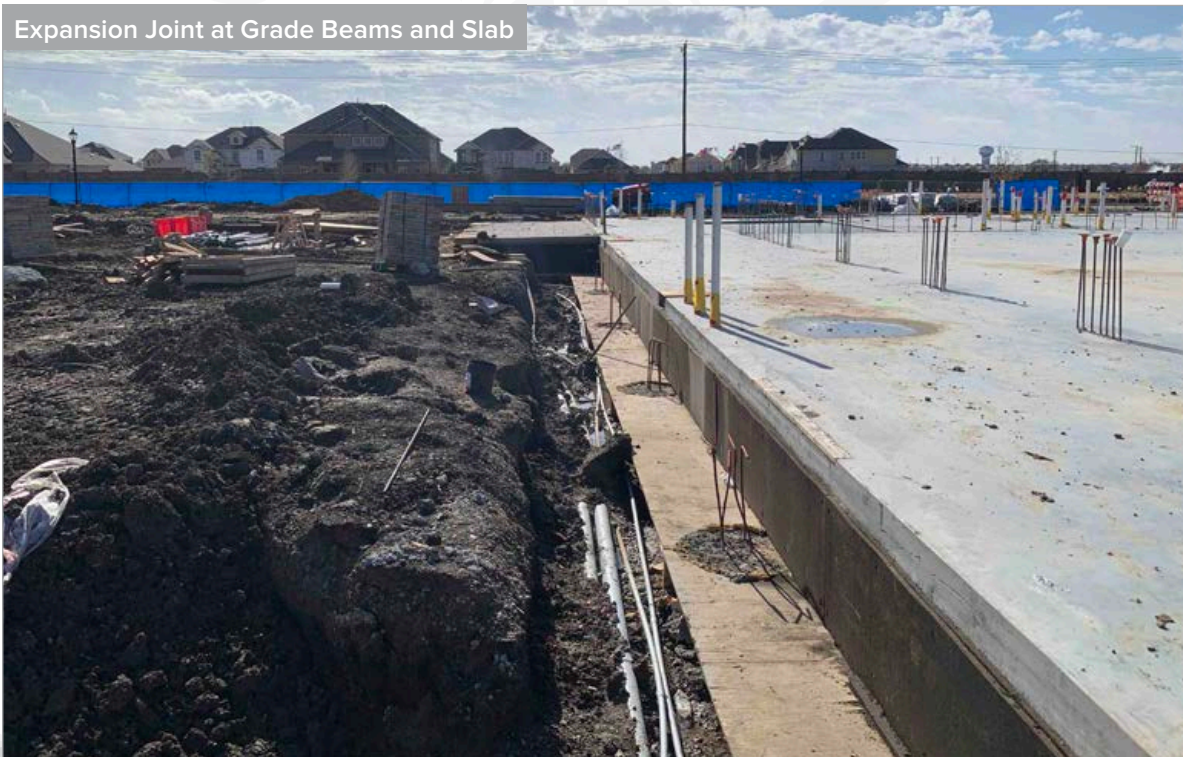
DAN CHRISTIE ELEMENTARY SCHOOL (ES#17)

AS OF DECEMBER 2022

Reinforcing for Vertical Masonry Walls



Expansion Joint at Grade Beams and Slab



BOARD UPDATE

PROSPER INDEPENDENT SCHOOL DISTRICT



BRENDA CALHOUN EARLY CHILDHOOD SCHOOL

AS OF DECEMBER 2022

WORK COMPLETED AND ONGOING:

- Site**
- Kitchen grease trap has been installed
 - Working on playground design and finalized pricing
- Building**
- Interior metal wall stud installation ongoing – Area A
 - MEP rough-in ongoing – Area A
 - Roofing ongoing – Area A
- Last concrete building slab has been poured
 - Structural steel, joist and deck are substantially complete – Areas A and B; ongoing – Areas C and D
 - Exterior sheathing installation ongoing – Area A



BOARD UPDATE

PROSPER INDEPENDENT SCHOOL DISTRICT



BRENDA CALHOUN EARLY CHILDHOOD SCHOOL

AS OF DECEMBER 2022



WALNUT GROVE HIGH SCHOOL

JACKSBORO LN

LUCKENBACH DR

LOOKING NORTH



LUCKENBACH DR

JACKSBORO LN

LOOKING SOUTH

BOARD UPDATE

PROSPER INDEPENDENT SCHOOL DISTRICT



BRENDA CALHOUN EARLY CHILDHOOD SCHOOL

AS OF DECEMBER 2022



Main Entry

BOARD UPDATE

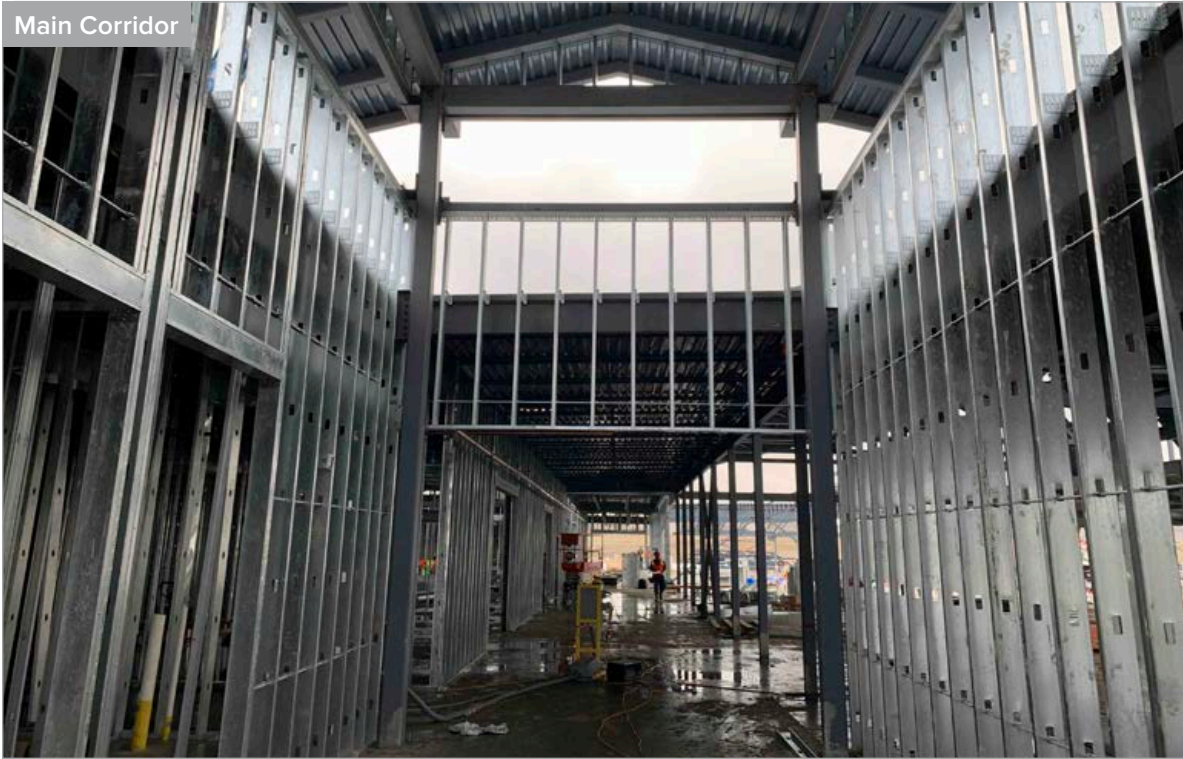
PROSPER INDEPENDENT SCHOOL DISTRICT



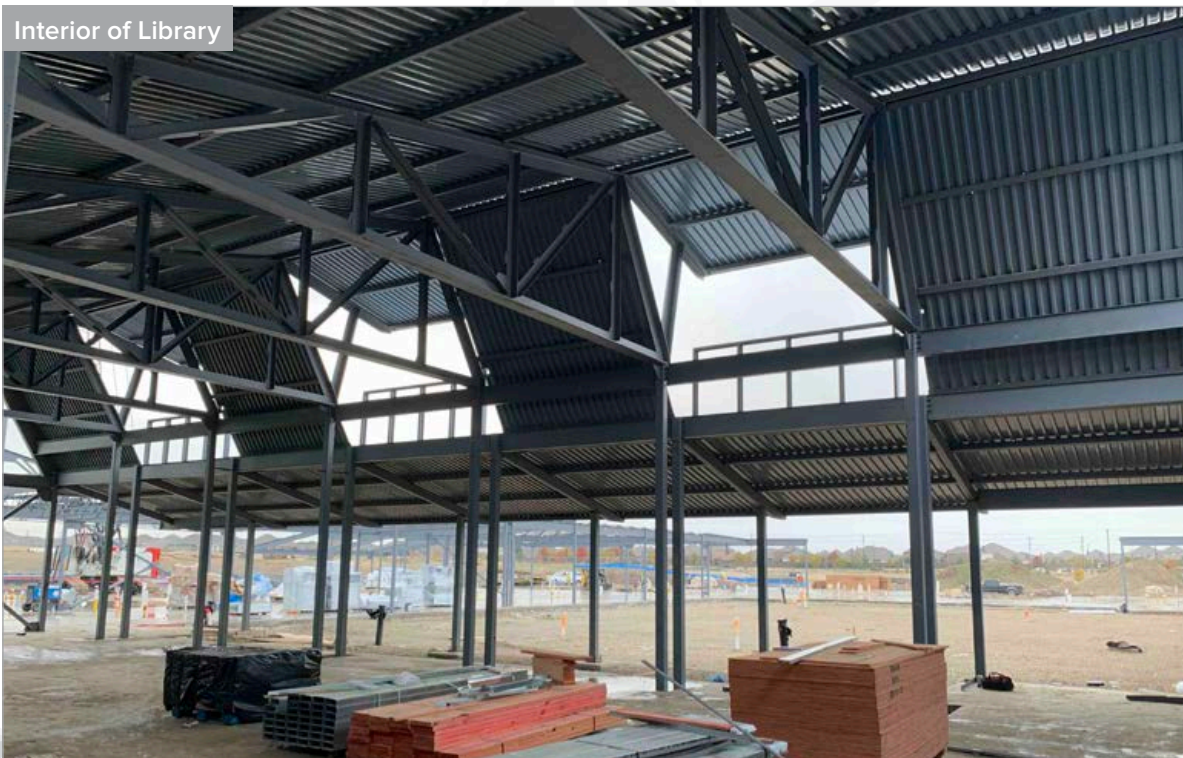
BRENDA CALHOUN EARLY CHILDHOOD SCHOOL

AS OF DECEMBER 2022

Main Corridor



Interior of Library



BOARD UPDATE

PROSPER INDEPENDENT SCHOOL DISTRICT



BRENDA CALHOUN EARLY CHILDHOOD SCHOOL

AS OF DECEMBER 2022

Interior of Library



Exterior of Library



BOARD UPDATE

PROSPER INDEPENDENT SCHOOL DISTRICT



BRENDA CALHOUN EARLY CHILDHOOD SCHOOL

AS OF DECEMBER 2022

Outdoor Courtyard Playground



Steel Erection of Academic Pod



BOARD UPDATE

PROSPER INDEPENDENT SCHOOL DISTRICT



BRENDA CALHOUN EARLY CHILDHOOD SCHOOL

AS OF DECEMBER 2022

Exterior Sheathing at Administrative Area



BOARD UPDATE

PROSPER INDEPENDENT SCHOOL DISTRICT



DANIEL L. JONES MIDDLE SCHOOL (MS #5)

AS OF DECEMBER 2022

WORK COMPLETED AND ONGOING:

Permits

- Early Grading – Approved
- Civil – Pending civil drawing revisions and resubmission per additional city requests
- Building – Permit status is shown as “Pre-Issuance”. Permit number and fee total have been established
- Misc. Permits – Signage and fencing permits are being revised and resubmitted per additional city requests

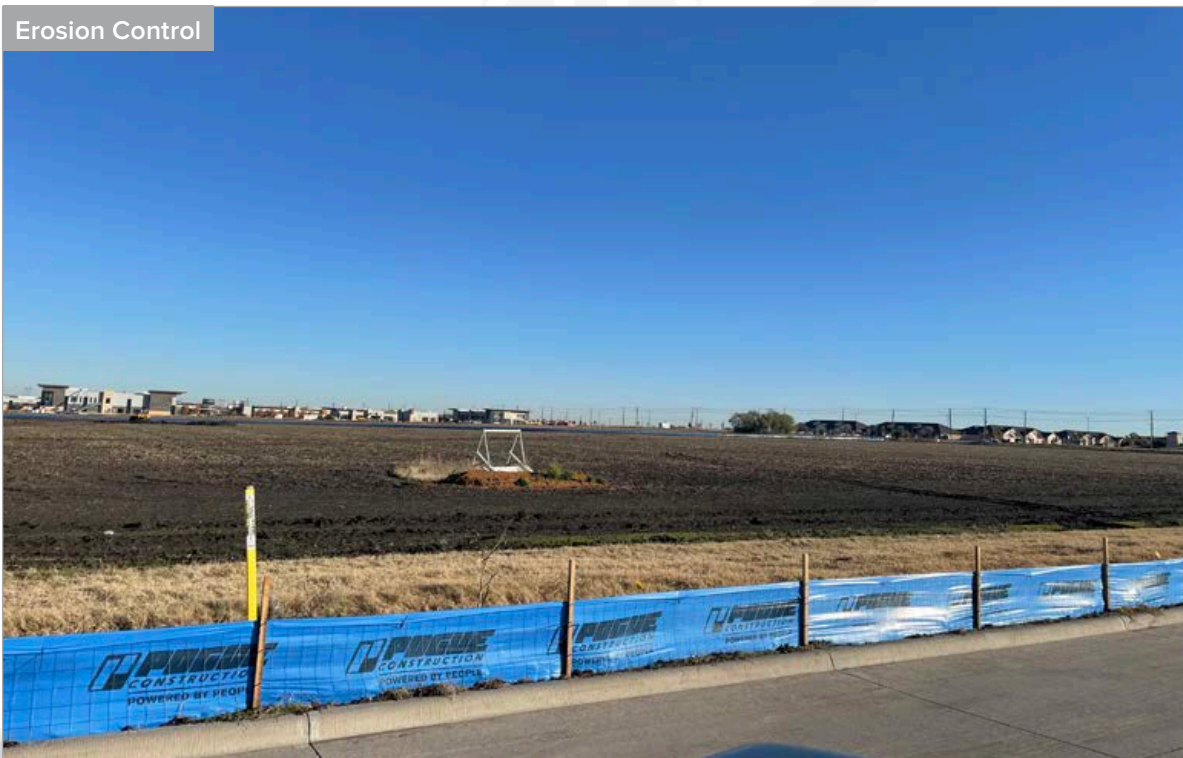
Pre-Construction Meetings

- Huckabee kickoff meeting complete
- City civil and city building pre-construction meetings – TBD pending permit release

Site

- Construction entrances are installed
- Erosion control installed and inspected
- Construction authorization inspection has been approved
- Construction road and laydown yard will be completed this week
- Job trailer will be delivered week of December 5
- Site stripping & grubbing is beginning this week

Erosion Control



BOARD UPDATE

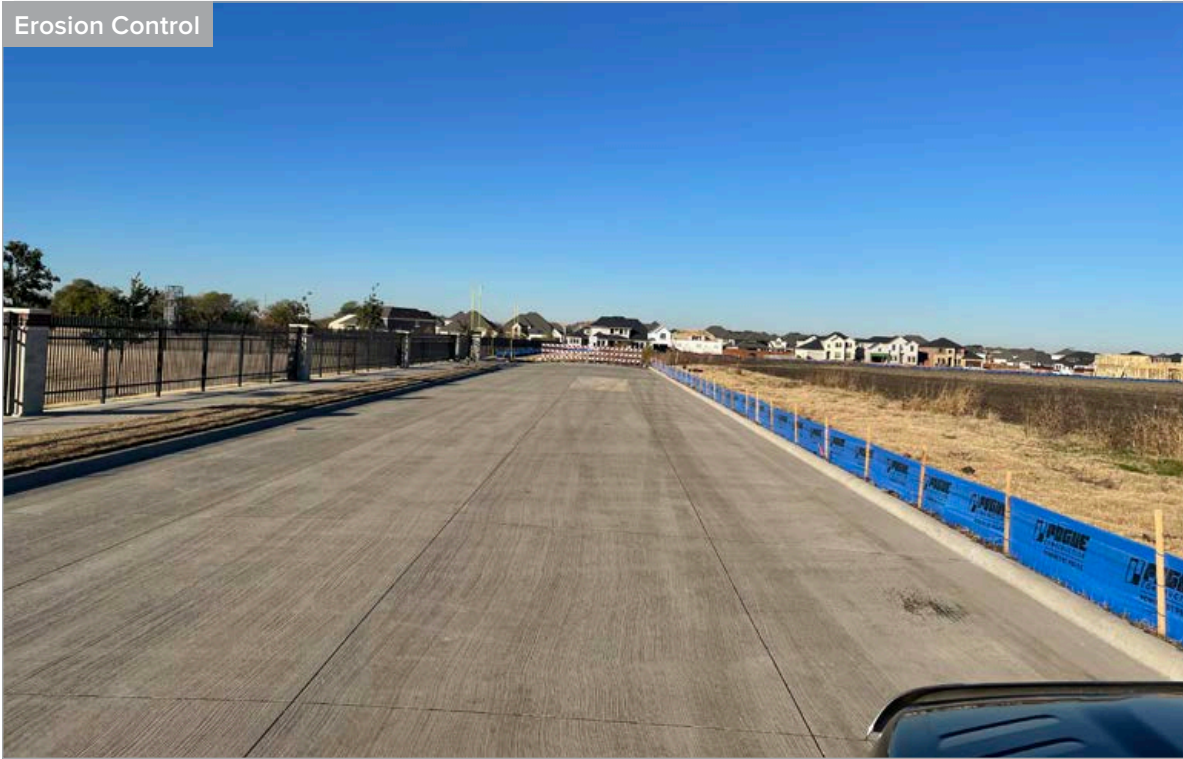
PROSPER INDEPENDENT SCHOOL DISTRICT



DANIEL L. JONES MIDDLE SCHOOL (MS #5)

AS OF DECEMBER 2022

Erosion Control



BOARD UPDATE

PROSPER INDEPENDENT SCHOOL DISTRICT



WALNUT GROVE HIGH SCHOOL (HS#3)

AS OF DECEMBER 2022

WORK COMPLETED AND ONGOING:

Site

- Baseball and softball fields are ready for turf (turf installation will occur in 2 months)
- Baseball and softball bleacher seating foundations ongoing
- Detention pond turf planting to begin once soils have dried out
- Irrigation installation ongoing – south side of property
- Irrigation well holding tank to install in December
- Track excavation complete and installation of track & field components ongoing
- Northeast retaining wall installation ongoing

Building

- Steel erection complete – Areas A, B, C, D, E, F, G, K, L, M, N, P, Q, R, S, T, U, V and W
- Steel erection is ongoing – Areas J and H
- Precast seating installation ongoing – Area J
- MEP/fire sprinkler overhead ongoing – Areas F, G, J and L
- Framing ongoing – Areas E, F, G, L and M
- Painting ongoing – Areas E, D, M, N and Q (clouds)
- Interior CMU walls ongoing – Areas J, L, and M
- Roofing ongoing – Areas E, F, G, L and M
- Exterior waterproofing ongoing – Areas E, F, G, and L
- Masonry veneer installation ongoing at east side – Areas D, E, F, L, Q and S

- Installation of masonry columns and arches ongoing at exterior – Areas D and Q
- Terracotta rain screen installation to begin week of November 28
- Interior storefront installation ongoing
- Fireproofing installation ongoing – Areas F, G and J
- Fire alarm installation ongoing – Areas D, E, P, R and S
- Painting ongoing – Areas D, N, P, R and S
- Low-voltage rough-in ongoing – Areas D, N, P, Q, P, R and S
- Security and access control installation ongoing – Areas D, E, P, R and S
- Tile installation ongoing in corridors – Areas E and M
- Display case framing in main corridor ongoing
- Wood wall and bench framing ongoing
- Millwork installation to begin week of November 28

Multipurpose Facility (MPF) and Ancillary Buildings

- Masonry veneer installation ongoing – Areas T, U and V
- Masonry ongoing nearing complete with CMU walls – Areas T and V
- Plaster ongoing at exterior high walls – Area U

BOARD UPDATE

PROSPER INDEPENDENT SCHOOL DISTRICT



WALNUT GROVE HIGH SCHOOL (HS#3)

AS OF DECEMBER 2022



BOARD UPDATE

PROSPER INDEPENDENT SCHOOL DISTRICT



WALNUT GROVE HIGH SCHOOL (HS#3)

AS OF DECEMBER 2022



BOARD UPDATE

PROSPER INDEPENDENT SCHOOL DISTRICT



WALNUT GROVE HIGH SCHOOL (HS#3)

AS OF DECEMBER 2022



BOARD UPDATE

PROSPER INDEPENDENT SCHOOL DISTRICT



WALNUT GROVE HIGH SCHOOL (HS#3)

AS OF DECEMBER 2022

Prep for Terracotta Rain Screen Installation (East Academic Wing)



Auditorium Entry



BOARD UPDATE

PROSPER INDEPENDENT SCHOOL DISTRICT



WALNUT GROVE HIGH SCHOOL (HS#3)

AS OF DECEMBER 2022

Auditorium Brick Arch Detail



Auditorium Lobby



BOARD UPDATE

PROSPER INDEPENDENT SCHOOL DISTRICT



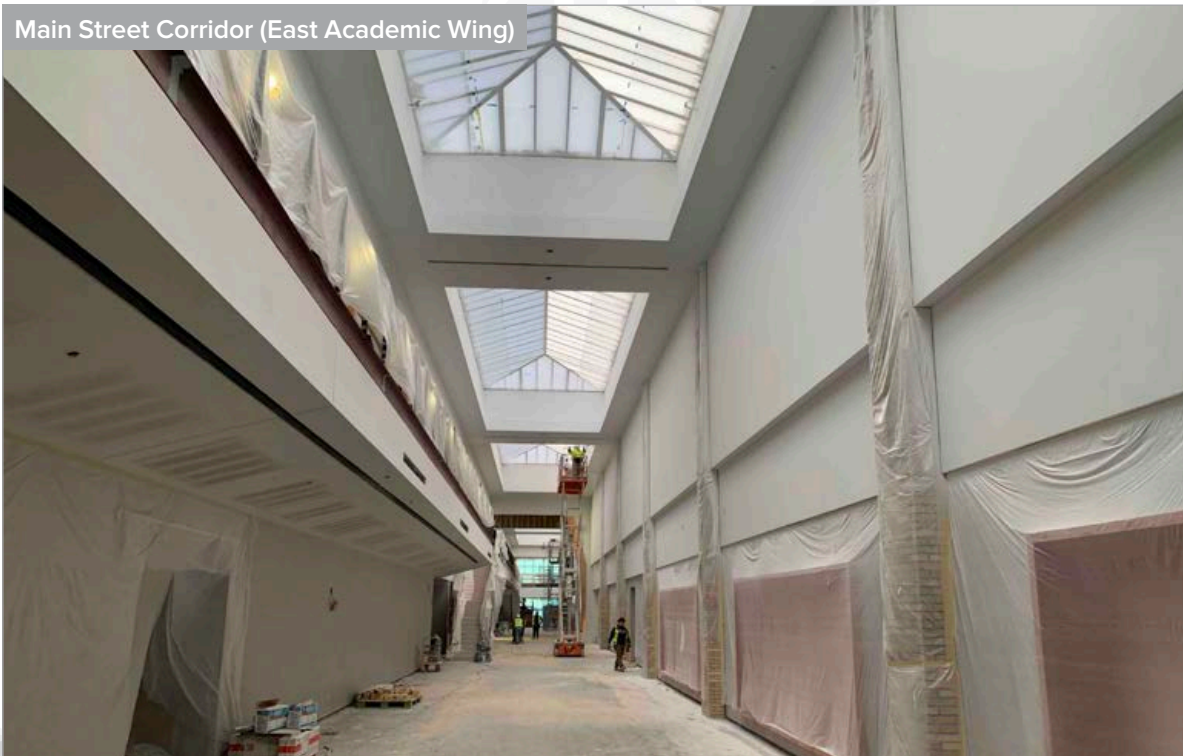
WALNUT GROVE HIGH SCHOOL (HS#3)

AS OF DECEMBER 2022

Academic Courtyard (East Academic Wing)



Main Street Corridor (East Academic Wing)



BOARD UPDATE

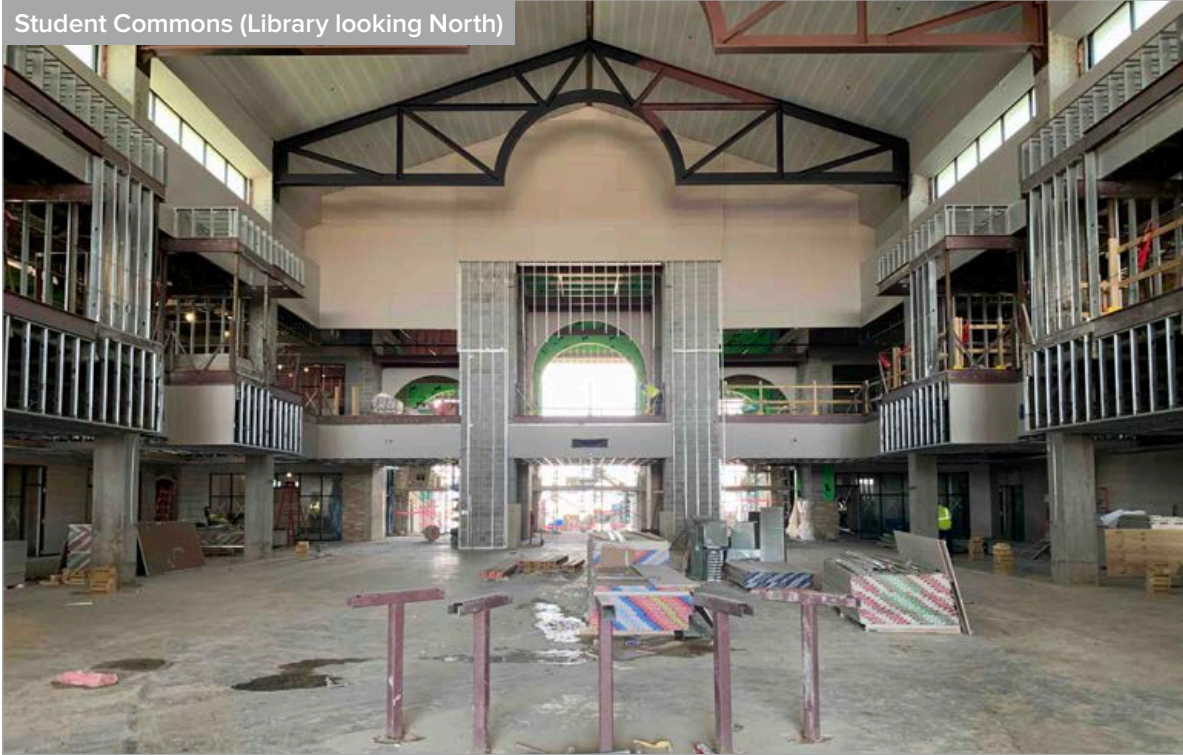
PROSPER INDEPENDENT SCHOOL DISTRICT



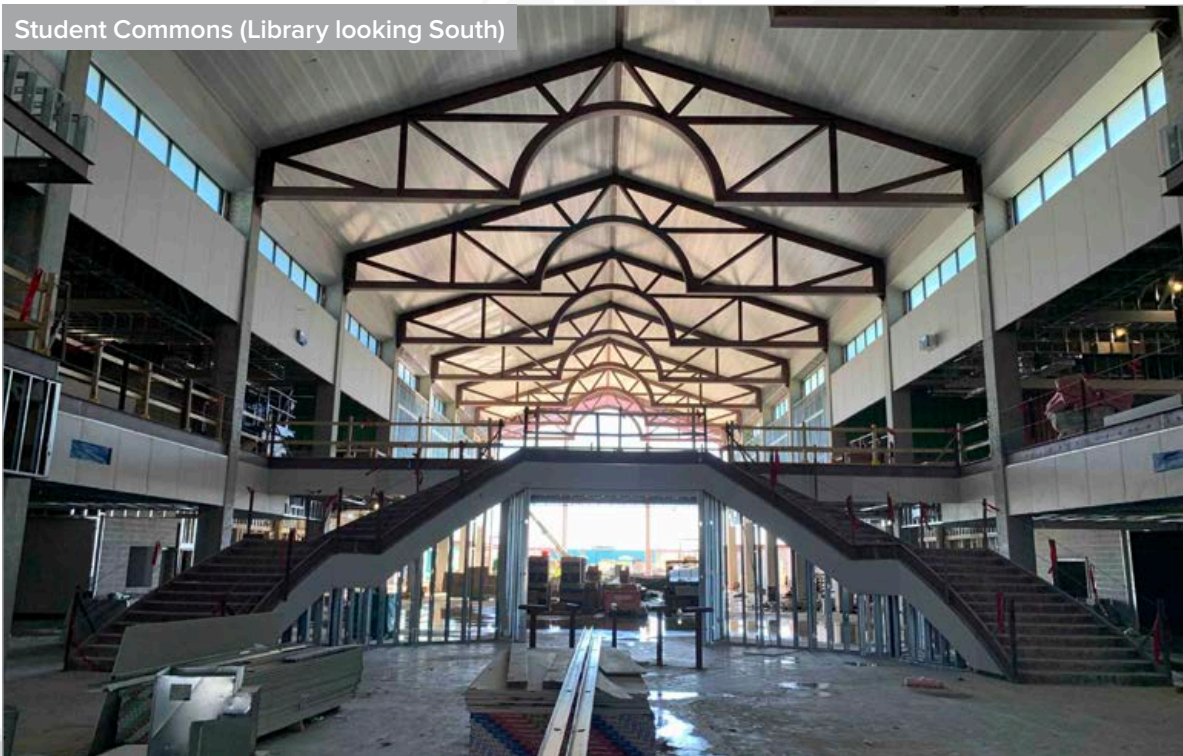
WALNUT GROVE HIGH SCHOOL (HS#3)

AS OF DECEMBER 2022

Student Commons (Library looking North)



Student Commons (Library looking South)



BOARD UPDATE

PROSPER INDEPENDENT SCHOOL DISTRICT



WALNUT GROVE HIGH SCHOOL (HS#3)

AS OF DECEMBER 2022

Main Street Corridor (West Academic Wing)



Rear Entry (Forum)



BOARD UPDATE

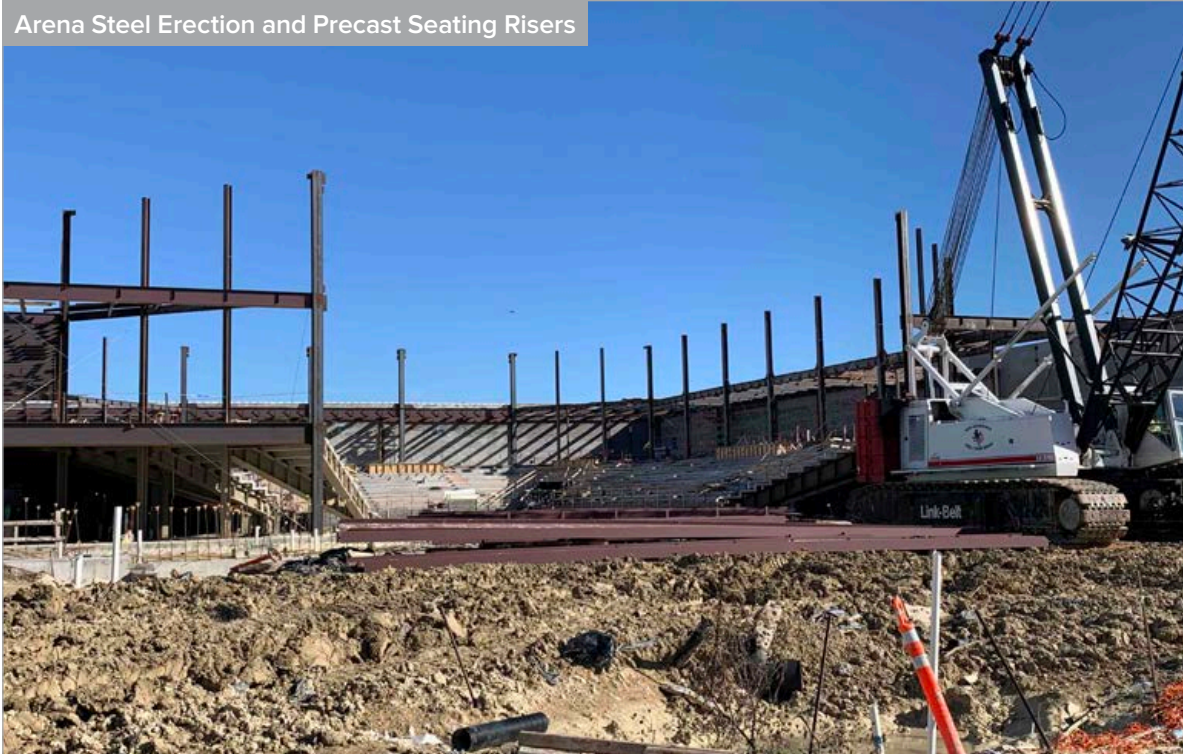
PROSPER INDEPENDENT SCHOOL DISTRICT



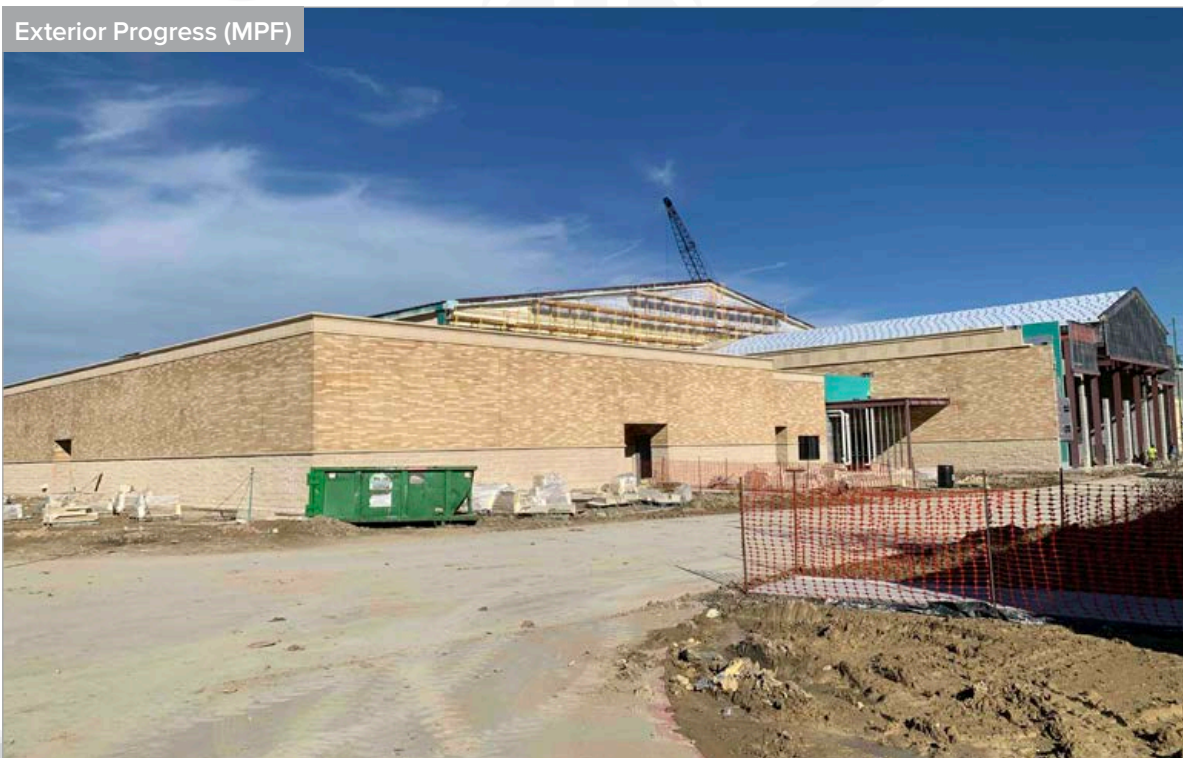
WALNUT GROVE HIGH SCHOOL (HS#3)

AS OF DECEMBER 2022

Arena Steel Erection and Precast Seating Risers



Exterior Progress (MPF)



BOARD UPDATE

PROSPER INDEPENDENT SCHOOL DISTRICT



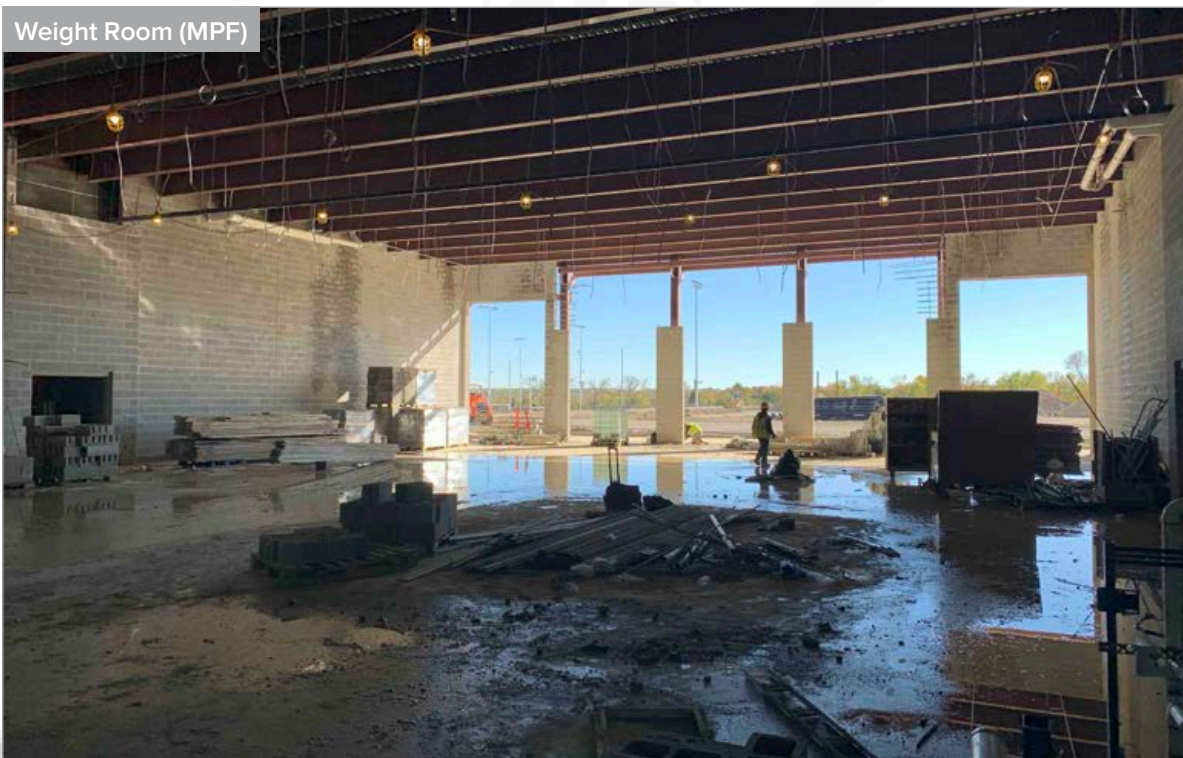
WALNUT GROVE HIGH SCHOOL (HS#3)

AS OF DECEMBER 2022

Interior Progress (MPF)



Weight Room (MPF)



BOARD UPDATE

PROSPER INDEPENDENT SCHOOL DISTRICT



WALNUT GROVE HIGH SCHOOL (HS#3)

AS OF DECEMBER 2022

Track Progress



Track Concession/Restroom Building



BOARD UPDATE

PROSPER INDEPENDENT SCHOOL DISTRICT



WALNUT GROVE HIGH SCHOOL (HS#3)

AS OF DECEMBER 2022

Tennis Courts

